

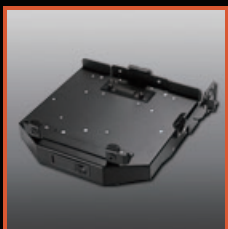
Getac

Rugged Mobile Computing Solutions

S400

Semi-rugged Notebook

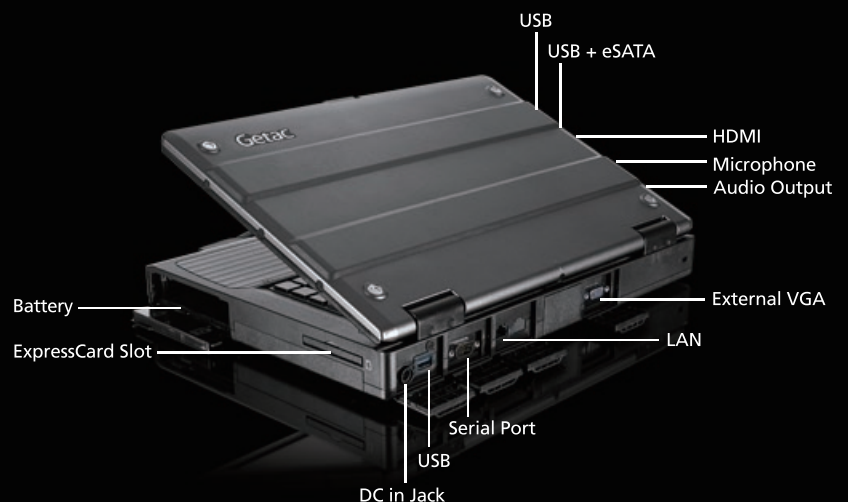
- 4th Generation Intel® Core™ i7 Processor
- 14" Optional Getac QuadraClear® Sunlight Readable Display: 800 Nits with Touchscreen
- Optional Office and Vehicle Dock Solutions
- Optional wide range operating temperature: -21°C to 60°C / -5.8°F to 140°F



Vehicle Dock



Office Dock



Rugged Mobile Computing Solutions



Specifications

Operating System	Windows 8 Professional Windows 7 Professional		DC in Jack x 1 USB 3.0 (9-pin) x 3 USB 2.0 / eSATA Combo x 1 LAN (RJ45) x 1 HDMI x 1 Docking connector (144-pin) x 1 Optional RF antenna pass-through for GPS and WWAN
Mobile Computing Platform	Intel® Core™ i7 Technology - Intel® Core™ i7-4712MQ Processor 2.3GHz, Max 3.3GHz, with Intel® Turbo Boost Technology - 6MB L3 Intel® Smart Cache - Mobile Intel® HM86 Express chipset Intel® Core™ i5 vPro™ Technology - Intel® Core™ i5-4310M vPro™ Processor 2.7GHz, Max. 3.4GHz with Intel® Turbo Boost Technology - 3MB L3 Intel® Smart Cache - Mobile Intel® QM87 Express chipset Intel® Core™ i5 Technology - Intel® Core i5-4210M Processor 2.6GHz Max. 3.2GHz with Intel® Turbo Boost Technology - 3MB L3 Intel® Smart Cache - Mobile Intel® HM86 Express chipset Intel® Core™ i3 Technology - Intel® Core i3-4110M Processor 2.6GHz - 3MB L3 Intel® Smart Cache - Mobile Intel® HM86 Express chipset	Communication Interface	10/100/1000 base-T Ethernet Intel® Dual Band Wireless-AC 7260; 802.11ac Bluetooth (v4.0 class 1) Optional SiRFstarIV™ GPS Optional Gobi™ mobile broadband
VGA Controller	Intel® HD Graphics 4600 ⁱ	Software	Getac Utility Adobe® Reader®
Display	14" TFT LCD HD (1366 x 768) Optional 800 nits QuadraClear® sunlight readable display with multi-touch screen	Security Feature	Optional Intel vPro™ Technology TPM 1.2 Optional fingerprint scanner Smart card reader Kensington lock
Storage & Memory	4GB DDR3L expandable to 16GB SATA HDD 500GB Optional SATA SSD 128 / 256GB	Power	AC adapter (90W, 100-240VAC, 50 / 60Hz) Batteryⁱⁱ: - Li-Ion smart battery (10.8V,8700mAh)
Keyboard	Membrane keyboard Optional LED backlit membrane keyboard	Dimension (W x D x H) & Weight	348 x 258 x 49.2 mm (13.7" x 10.15" x 1.93"), 2.9 kg (6.4 lbs) ⁱⁱⁱ
Pointing Device	Touchscreen - Optional pressure sensitive multi-touch screen Touchpad - Glide touchpad with scroll bar	Rugged Feature	MIL-STD-810G certified and IP5X certified Keyboard splash resistant Sealed ports and connectors Shock-protected removable HDD Vibration & drop resistant
Expansion Slot	ExpressCard/54 x 1 SD card reader x 1	Environmental Specification	Temperature ^{iv} : - Operating: -21°C to 60°C / -5.8°F to 140°F - Storage: -40°C to 71°C / -40°F to 160°F Humidity: - 95% RH , non-condensing
Multimedia Bay	Optional DVD super multi drive	Optional Accessories	Carry bag Battery charger Vehicle adapter (90W, 11-16VDC and 22-32VDC) Stylus and tether Protection film Main Battery (10.8 V,8700mAh) AC adapter (90W, 100-240VAC) Vehicle dock Office dock
I/O Interface	Optional webcam x 1 Serial port (9-pin; D-sub) x 1 External VGA (15-pin; D-sub) x 1 Microphone (Mini-jack) x 1 Audio output (Mini-jack) x 1		

Docking Solutions

	Dimension (W x D x H)	Serial Port	External VGA	Microphone	Audio Output	DC in Jack	USB	USB / eSATA Combo
Vehicle Dock	312 x 309 x 106 mm (12.3" x 12.2" x 4.2")	2	1	1	1	1	3	1
Office Dock	288 x 172 x 53 mm (11.3" x 6.8" x 2.1")	2	1	1	1	1	3	1
	LAN	DVI	PS/2	Display Port	Parallel Port	RF Antenna Connector		
Vehicle Dock	1	1	2	1	1	2 (optional)		
Office Dock	1	1	2	1	1	--		

i Share memory size may vary by different operating system and RAM size.
 ii Battery life testing conducted under Mobile Mark 2007. Battery performance will vary upon software applications, wireless settings, power management settings, LCD brightness, customized modules and environmental conditions. The battery has a limited number of charge cycles and may eventually need to be replaced by a Getac service provider. Battery life and charge cycles vary by use and settings.
 iii Weight varies from configurations and optional accessories.
 - Standard display: 2.9 kg - 3.2 kg (6.4 lb - 7 lb)
 - QuadraClear® sunlight readable display with touchscreen: 3.4 kg - 3.6 kg (7.4 lb - 8 lb)
 iv Tested by a national independent third party test lab following MIL-STD-810G.



Getac Technology Corporation

5F, Building A, No. 209, Section 1, Nangang Rd., Nangang Dist.,
 Taipei City, 11568, Taiwan, R.O.C.
 Tel: +886 2 2785 7888
 globalmarketing@getac.com
 www.getac.com

